

# KH5665

## Automatic Multi-Head HIGH DRIVER SYSTEM (Pallet Type)



The *KH5665 Automatic Multi-Head High Driver System* is designed to support pallet type final frequency adjustment system, such as Kolinker KH2200 system, to perform high driving process to the crystals.

It is a single axis moving mechanism, which can work for 15 channels 8mm pitch or 16 channels 7mm pitch dual pallet format. Pallet format is selectable and saved in the system.

It uses EIA-512 circuit format to high driving the crystal and provides general crystal measurement result. Testing specifications include all crystal parameters such as  $F_s$ ,  $FL$ ,  $R_s$ ,  $C_0$ ,  $C_1$ ,  $L_1$ ,  $Q$ ,  $T_s$ ,  $DLD$ ...etc. Since, the system's aim is high power crystal driving operation; the measuring result is for general reference only, not for accurate standard.

It can provide general production batch report for production QC control.



### Kolinker Precision Technology Limited

Member of Kolinker Group  
Unit C, 24/F., Shield Industrial Centre, 84 - 92 Chai Wan Kok Street, Tsuen Wan, N.T., Hong Kong  
Tel: (852) 3511 2388 Fax: (852) 35112300  
E-mail: [kolinker@kolinker.com](mailto:kolinker@kolinker.com) Home page: <https://www.kolinker.com>

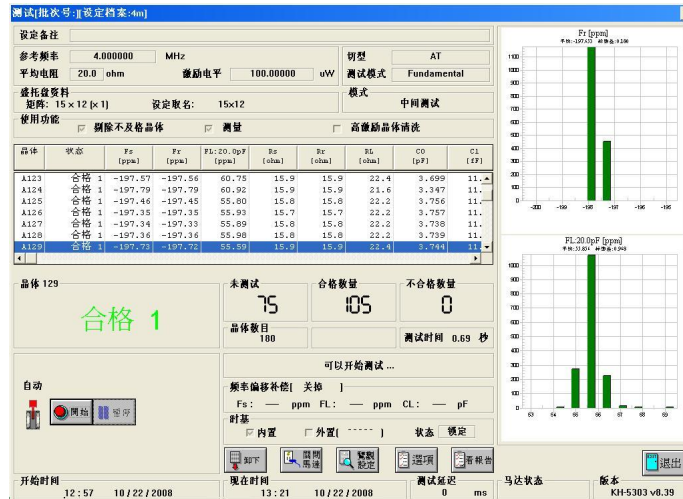


## Specifications

- Frequency Range : 5 - 120 MHz
- Effective Drive Power : ~500mW (Max) @ 25 ohm.
- Driving circuit format : EIA512
- Driving time setting : 0.1sec ~ 45sec(max) per pcs
- Reference Parameters : Fs, Fr, FL, Rs, Rr, RL, CL, C0, C1, L1, Q, Ts, C0/C1, DLD...  
(Measurement accuracy is not guarantee as for reference only)

\*\*Parameter limits as general filtering are individually programmable by user.

- User friendly system operation including menu driven, mouse operation and easy system calibration.
- GB(Chinese) operation software
- Calibration Method : Short /Load/Open
- Industrial Computer (or compatible) with Windows®XP.
- Compressed Air Required.
- Dimensions : 540(W) x 820(D) x 1600(H) (Not include Signal Pole)



Above shows the software main screen during operation for reference.

## Optional

- Customize different pitch test head upon request

Specifications are subject to change without prior notice.  
Photo shown is for reference only.  
Windows is a registered trademark of Microsoft Corp.



## Kolinker Precision Technology Limited

Member of Kolinker Group  
Unit C, 24/F., Shield Industrial Centre, 84 - 92 Chai Wan Kok Street, Tsuen Wan, N.T., Hong Kong  
Tel: (852) 3511 2388 Fax: (852) 35112300  
E-mail: kolinker@kolinker.com Home page: <https://www.kolinker.com>

