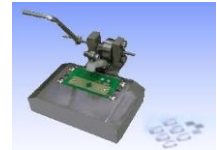


KH1800 / KH1820

PI - network Crystal Measurement System



Ultra High Speed Spurious scan & DLD measurement



[SMD Test Fixture](#)



[Supports Physical Load Capacitor](#)



[Universal SMD Adapter Kit](#)



[Tuning Fork Test Fixture](#)

- High Accuracy IEC60444-5 & IEC60444-6 PI-Network Measurement.
- Supports "Direct Impedance Measurement" and "Physical Load Capacitance" methods for FL measurement.
- Full Network Analyser Configuration with built-in Frequency synthesizer and Vector-voltmeter.
- Supports two types of user interface for production mode and engineering mode Production
- Ultra high speed spurious scan & drive level dependence (DLD) measurement.
- High speed PASS/FAIL measurement and sorting up to 5 bins (sorting results displayed on screen).
- All sorting limits of each bin are individually programmable by operator.
- Flexible data storage (Supports data storage in Excel worksheet format) and printing features.
- Support multilingual: simplified Chinese, traditional Chinese and English.
- Optional Test Fixture for Tuning Fork Crystal, SMD crystal etc
- Optional connectivity with third party automatic machines: Hardware I/O control mode or software remote control mode are available for interfacing the KH1800 with any automatic machines.
- External time base interface.
- Frequency Range : KH1800 : 1-120MHz
KH1820 : 20KHz – 400KHz, 500KHz – 240MHz
- Drive Level : 1nW - 1mW into 25 Ohm.
- Measurement capabilities (more than 48 parameters): Fr, Fs, FL, Rr, Rs, RL, CL, C0, C1, L1, Q, Ts, C0/C1, DF1, DF2, FL1, FL2, DLD-F, DLD-R, DLD- γ (gamma : IEC444-6 standard), spurious scan.
- Repeatability : Fs $\leq \pm$ Time base error ± 1 ppm.
FL $\leq \pm$ Time base error ± 1 ppm $\pm (0.2\text{pF} \times \text{Ts of crystal})$.
Rs $\leq \pm 8\% \pm 1\Omega$.
- Time Base error : ex-factory calibration ≤ 1 ppm
aging for 1st year ≤ 2 ppm
aging for 2nd year and thereafter ≤ 1 ppm
- Calibration Method : 3 terms (open, short and load) calibration with standard resistor (provided with system).
- Requirements on personal computer supplied by user:

For optimum performance, the following configuration is recommended: Intel Core 2 Duo E4500 2.2GHz with 1G RAM , USB, PCI slot , , **PCI bus (for full size card) with +3.3V and +5V power is essential**, Microsoft Windows® XP /Windows 7/ Win10 (32/64 Bits)



Kolinker Precision Technology Limited

Member of Kolinker Group

Unit C, 24/F., Shield Industrial Centre, 84 - 92 Chai Wan Kok Street, Tsuen Wan, N.T., Hong Kong

Tel: (852) 3511 2388

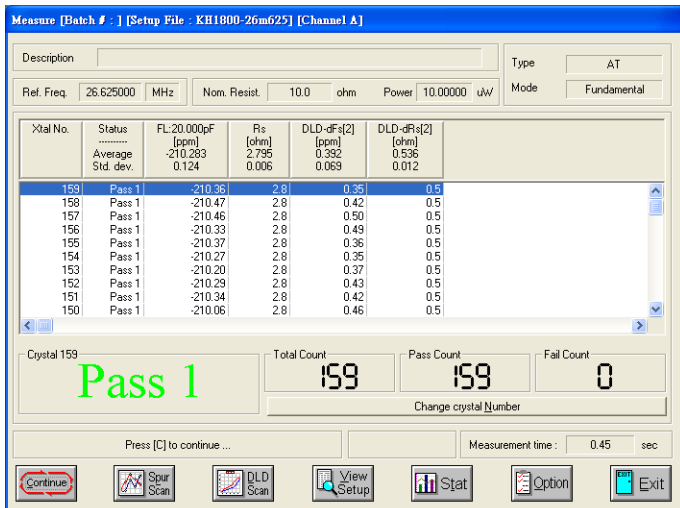
Fax: (852) 35112300

E-mail: kolinker@kolinker.com Home page: <https://www.kolinker.com>

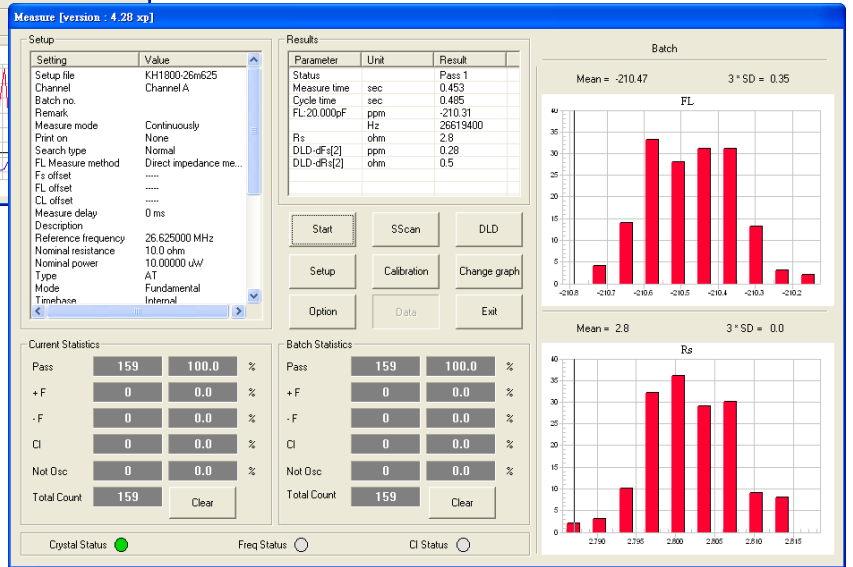


1288E00-1094 R04

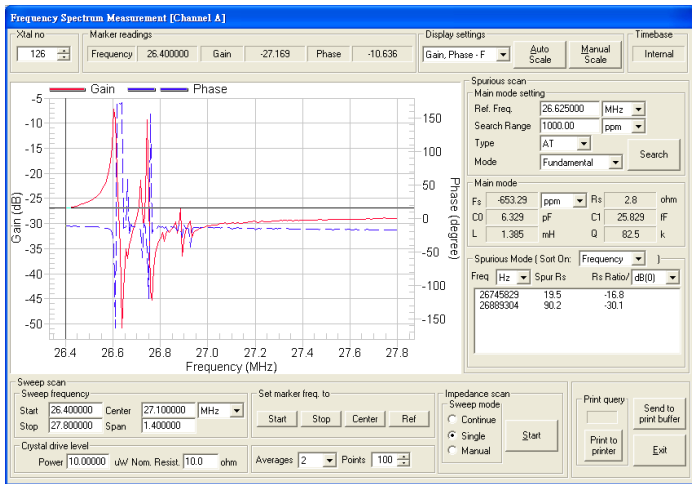
GRAPHICAL DISPLAY FORMAT



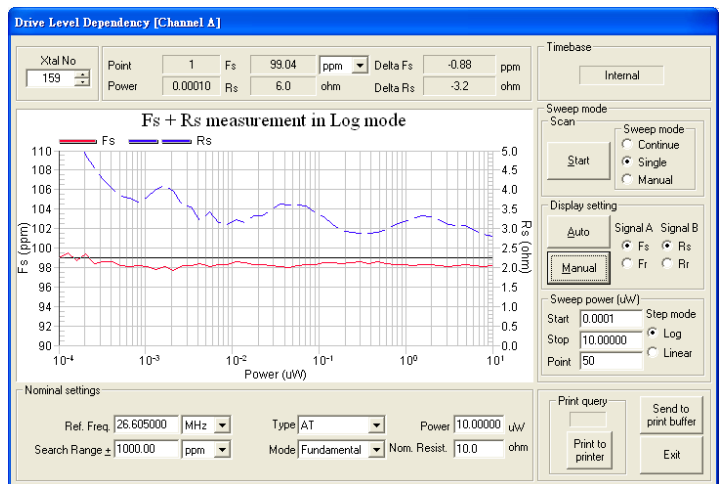
Engineering Mode



Production mode



Spurious Response Scanning



Drive Level Dependence (DLD)

Specifications are subject to change without prior notice.
 Photo shown is for reference only.
 Windows is a registered trademark of Microsoft Corp.



Kolinker Precision Technology Limited

Member of Kolinker Group
 Unit C, 24/F., Shield Industrial Centre, 84 - 92 Chai Wan Kok Street, Tsuen Wan, N.T., Hong Kong
 Tel: (852) 3511 2388 Fax: (852) 35112300
 E-mail: kolinker@kolinker.com Home page: <https://www.kolinker.com>

