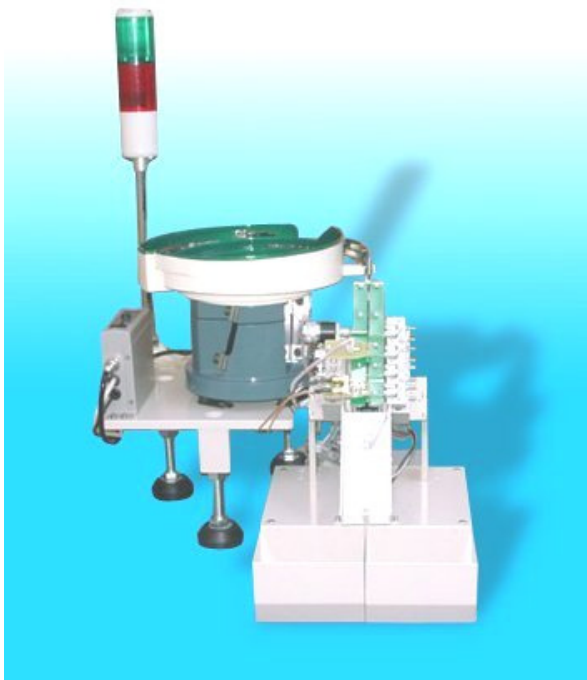


# KS330

## 49S-SMD Desk Top Crystal Sorter



[KH1800 / KH1820](#)

### Features

- **No compressed Air! Dedicated design for crystal trader/manufacturer, IQC, sample check**
- **High speed DLD measurement (10 points DLD measuring time approx. 0.5 sec)**
- Built-in KH1800 or KH1820 High accuracy Network Analyzer subsystem
- High Accuracy PI-Network Measurement compatible to IEC60444-5 & IEC60444-6
- Ultra high speed spurious scan & drive level dependence (DLD) measurement
- Sorting capability for all crystal parameters
- Microsoft Windows® operation allows high quality graph and report printout.
- Simple adjustment for different height 49S-SMD crystals (Optional for 49S short lead crystal (lead length <5mm))
- 2 sorting bins "PASS", "FAIL" (optional 4 bins)
- Numerous User selectable Test Report formats
- Fully computer controlled : Easy operation with color monitor and full ASCII keyboard

### Specifications

- Frequency Range : 1 to 120 MHz (KH1800), 1 to 240 MHz (KH1820)
- Measurement throughput : Approx. 4200 pcs/hr\*
- Measurement Capabilities : Fs, Fr, FL, FL1, FL2, Rs, Rr, RL, CL, C0, C1, L1, Q, Ts, C0/C1, DF1, DF2, DLD, DLD-gamma, Spurious Scan, IR.....(> 46 parameters)
- Drive Level : 10nW - 1mW
- Power : AC220V, 50Hz
- Dimensions : 450mm(W) x 540mm(D) x 400mm(H), ( Not include light pole )  
Main Unit : 250mm(W) x 200mm(D) x 330mm(H)
- Weight : 35Kg (Main Unit + Feeder Bowl)

\* Freq. > 6MHz, standard parameters (not include DLD, spurious), depends on crystal frequency, stability and Q factor etc.)



### Kolinker Industrial Equipments Limited

Unit M, 24/F, Shield Industrial Centre, 84 - 92 Chai Wan Kok Street, Tsuen Wan, New Territories, Hong Kong.

Phone : (852) 3511 2388

E-mail : [kolinker@kolinker.com](mailto:kolinker@kolinker.com)

Fax : (852) 3511 2300

Home page : <http://www.kolinker.com>

## Software Capabilities

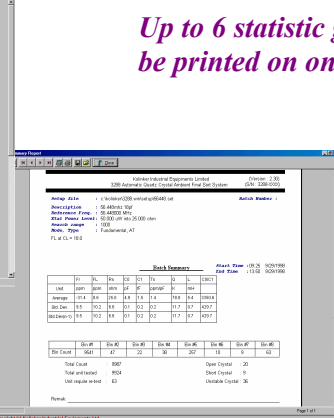
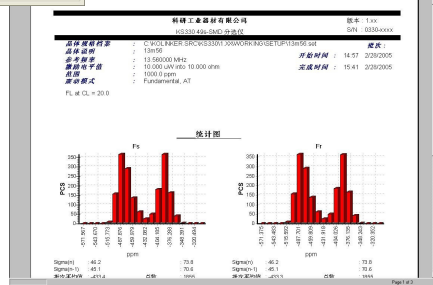
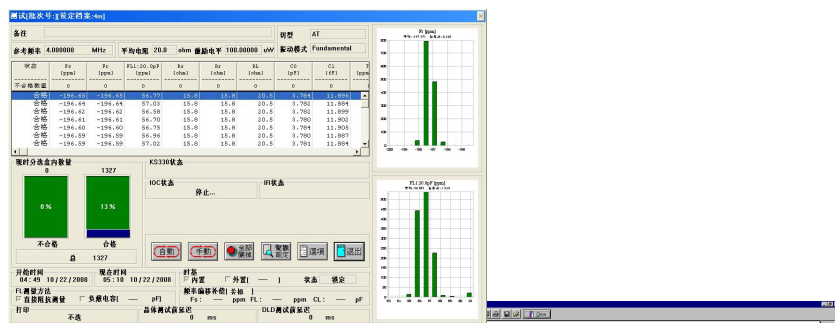
- Easy to operate, full screen editor and all test parameter limit specifications are stored as "Setup File" in the computer hard disk for easy operation.
- Setup Files contain the crystal frequency, drive level, and specific crystal parameters to be measured and also specifies how the crystals are sorted into bins
- During automatic test mode, the computer displays the measured crystal parameters and the number of crystals in each bin continuously.
- The software compiles statistical information for the crystals being tested. This information includes mean, standard deviation, and distribution graphs.
- Testing data can be stored and printout.

## Standard System Configuration

- KH1800 or KH1820 PI network Crystal measurement subsystem 1 set
- Operation software & cabling 1 set
- Controller Card 1 set
- Main Unit 1 set
- PI Test Head 1 set
- Sorting Bins 2 sets
- Automatic Feeder Bowl for 49S-SMD crystals 1 set

## Options :

- Windows compatible printer
- Industrial or Lenovo or IBM Compatible computer with Windows XP, **recommended for optimum performance: Intel Core 2 Duo E4500 2.2GHz or above with 1G RAM , USB port, PCI slot (Full size PCI slot with +3V and +5V is required)**
- KM3900 IR meter
- 4 bins option



*Up to 6 statistic graphs can be printed on one page.*

*Reports can be previewed on screen or printed to printer*

Specifications are subject to change without prior notice.  
Photo shown is for reference only.



## Kolinker Industrial Equipments Limited

Unit M, 24/F, Shield Industrial Centre, 84 - 92 Chai Wan Kok Street, Tsuen Wan, New Territories, Hong Kong.  
Phone : (852) 3511 2388 E-mail : kolinker@kolinker.com  
Fax : (852) 3511 2300 Home page : http://www.kolinker.com