

QCM Pro Crystal Measurement Software for Hewlett Packard E5100 series Network Analyser



- *Extend the capabilities of E5100 to high accuracy IEC444 pl-network crystal measurement.*
- *Microsoft Windows[®] 3.1/95/98 operation.*
- Measurement capabilities : Fr, Fs, FL, Rr, Rs, RL, CL, C0, C1, L1, Q, Ts, C0/C1, DF1, DF2, FL1, FL2, DLD, DLD-gamma (IEC444-6 standard), spurious scan.
- Automatic spurious response and drive level dependence measurement.
- Extensible measurement head.
- High speed Pass/Fail measurement and sorting upto 5 bins (sorting results displayed on screen).
- Typical measurement speed for single Fs and FL measurement – 0.8 sec / pc.
- All sorting limits of each bins are individually programmable by operator.
- User friendly system operation including menu driven, mouse operation and easy system calibration.
- Flexible data storage and printing features.
- Optional multi-languages operating software for using in different countries (Chinese, English, and more ...).
- Calibration Method : with standard resistor (provided as options).
- Operates with National Instruments GPIB interface card (PCI or ISA bus) for communication between computer and E5100.
- Operates with Hewlett Packard E5100, E5100A or E5100B.

Standard package :

- Kolinker crystal measurement software for E5100.
- Kolinker software protection card (ISA bus).

Optional items to be supplied upon customer request :

- IBM[™] PC compatible computer system with minimum one ISA and one ISA/PCI Slot, Pentium 200MHz or above, 1.44MB floppy drive, 16M RAM, 2GB hard disk, Windows[®] 3.1 / 95 / 98, mouse, 800 x 600 SVGA display adaptor.
- Printer with Windows[®] driver.
- Hewlett Packard E5100 /A /B Network Analyser.
- Hewlett Packard and Kolinker test fixtures.
- National Instruments GPIB Interface Card for ISA bus – model : GPIB-PCIIA (or equivalent).
- National Instruments GPIB Interface Card for PCI bus – model : PCI-GPIB (or equivalent).
- Kolinker I/O interface card for machine automation.



Kolinker Industrial Equipments Limited

Unit H-I, 22/F, Shield Industrial Centre, 84 - 92 Chai Wan Kok Street, Tsuen Wan, New Territories, Hong Kong.

Phone : (852) 2412 0121

E-mail : kolinker@kolinker.com

Fax : (852) 2498 5908

Home page : <http://www.kolinker.com>

GRAPHICAL DISPLAY FORMAT

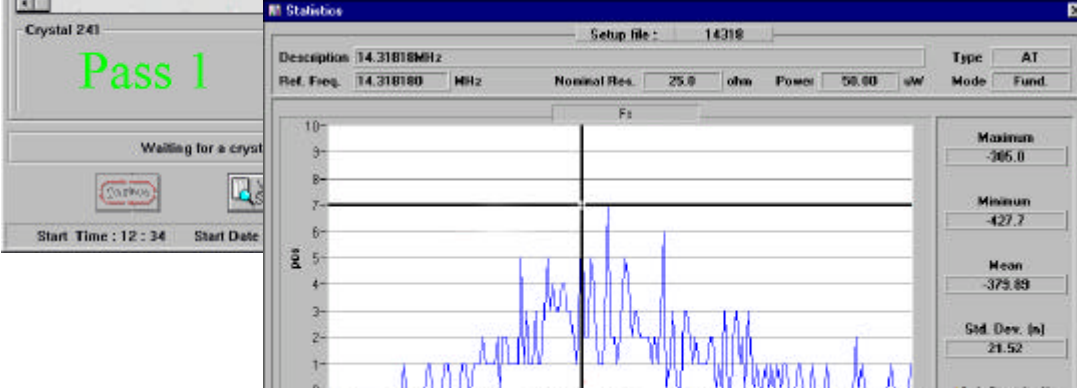
Measure [Batch # :] [Setup File : 14318]

Setup Description: 14.31818MHz Type: AT

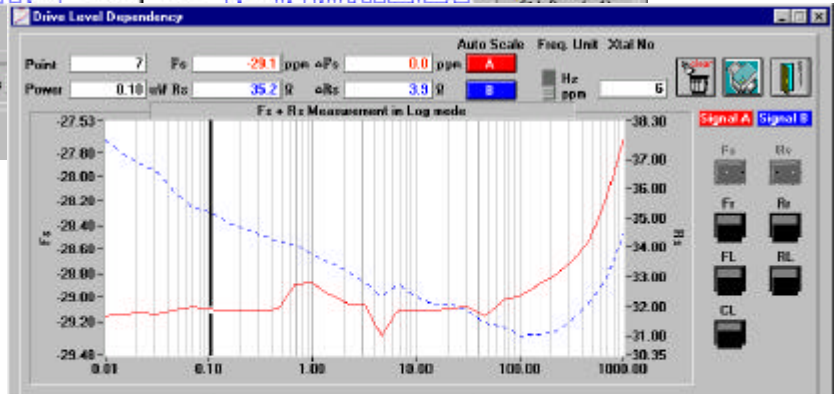
Ref. Freq.: 14.318180 MHz Nominal Res.: 25.0 ohm Power: 50.00 uW Mode: Fundamental

Xtal	Structure	Fc (ppm)	F1-20 (ppm)	Fc (ppm)	C0 (ppF)	C1 (ppF)	Fc (ppm/ppF)	Q (k)	1 (ppm)	C0/C1
241	Pass 1	-399.7	-0.8	6.6	5.1	19.7	15.6	86.0	6.3	259.8
240	Pass 1	-391.0	0.1	6.3	4.9	19.6	15.9	66.8	6.3	244.4
239	Pass 1	-380.1	-19.4	6.6	4.9	17.5	14.2	95.5	7.1	276.8
238	Pass 1	-345.3	-5.8	7.1	4.2	16.8	14.4	92.6	7.4	248.8
237	Pass 1	-404.8	-18.5	7.6	4.5	19.2	16.0	76.3	6.4	292.8
236	Pass 1	-407.2	-6.3	6.0	4.4	19.6	16.4	93.8	6.3	325.4
235	Pass 1	-387.0	-16.5	7.7	3.9	17.7	15.5	81.1	7.0	222.1
234	Pass 1	-383.0	7.9	10.6	4.0	19.2	16.6	64.9	6.5	311.2
233	Pass 1	-382.8	-1.9	7.8	4.2	19.3	15.6	77.7	6.7	330.3
232	Pass 1	-379.1	-3.2	7.6	4.3	18.5	15.6	78.8	6.7	234.5

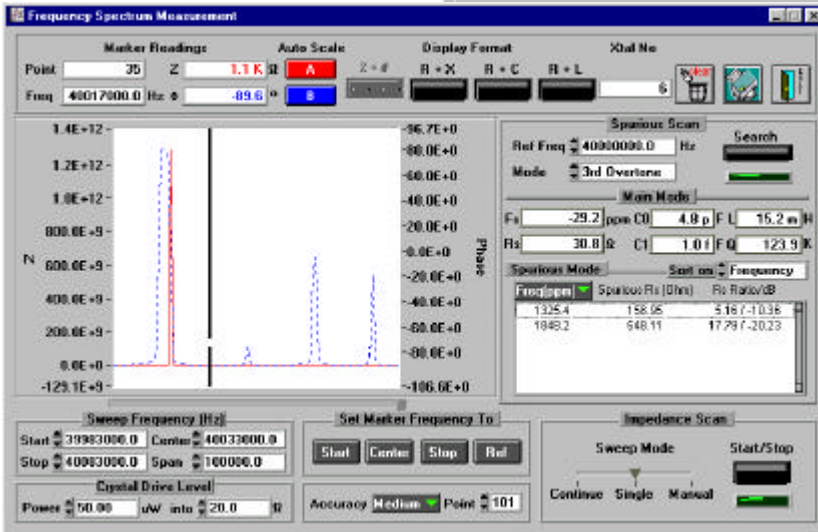
QC Measurement



Statistical Graph



Drive Level Dependency (DLD)



Spurious Response Scanning

Agent :

Specification herein are preliminary, and are subject to change without prior notice.
 Photo shown is for reference only.
 Windows is a registered trademark of Microsoft Corp.
 HP is a registered trademark of Hewlett Packard.
 IBM is a registered trademark of International Business Machines, Inc.



Kolinker Industrial Equipments Limited

Unit H-I, 22/F, Shield Industrial Centre, 84 - 92 Chai Wan Kok Street, Tsuen Wan, New Territories, Hong Kong.
 Phone : (852) 2412 0121 E-mail : kolinker@kolinker.com
 Fax : (852) 2498 5908 Home page : http://www.kolinker.com