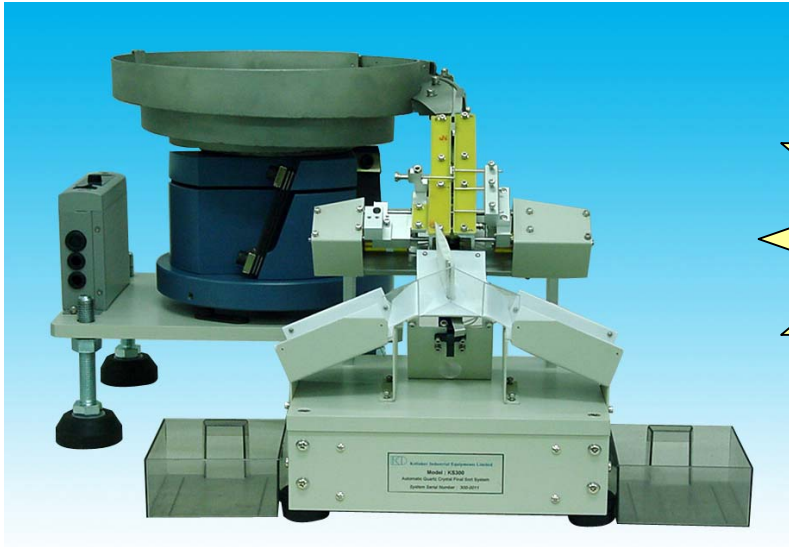


KS300

Desk Top Crystal Sorter

(1-120MHz / 1-240 MHz)



- **Easy to use**
- **Low cost, High performance!**
- **Easy maintenance**
- **No Compressed Air**



[KH1120 / KH1240](#)

Features

- **No compressed Air! Delicated design for crystal trader/manufacturer, IQC, sample check**
- **High speed DLD measurement (10 points DLD measuring time approx. 0.5 sec)**
- Built-in KH1120 or KH1240 High accuracy Network Analyzer subsystem
- High Accuracy PI-Network Measurement compatible to IEC444
- Sorting capability for all crystal parameters
- Microsoft Windows® operation allows high quality graph and report printout.
- No special adjustment for HC-49U and HC-49US crystals (KS300-UM is special version for UM crystals)
- 2 sorting bins "PASS", "FAIL"
- Numerous User selectable Test Report formats
- Fully computer controlled : Easy operation with color monitor and full ASCII keyboard

Specifications

- Frequency Range : 1 to 120 MHz (KH1120), 1 to 240 MHz (KH1240)
- Measurement throughput : Approx. 5200 pcs/hr*
- Measurement Capabilities : Fs, Fr, FL, FL1, FL2, Rs, Rr, RL, CL, C0, C1, L1, Q, Ts, C0/C1, DF1, DF2, DLD, DLD-gamma, Spurious Scan, IR.....
- Drive Level : 10nW - 1mW
- Power : AC220V, 50Hz
- Dimensions : 600mm(W) x 500mm(D) x 400mm(H),
Main Unit : 250mm(W) x 200mm(D) x 300mm(H)
- Weight : 35Kg (Main Unit + Feeder Bowl)

* (depends on crystal frequency, stability and Q factor etc.)



Kolinker Industrial Equipments Limited

Unit H-I, 22/F, Shield Industrial Centre, 84 - 92 Chai Wan Kok Street, Tsuen Wan, New Territories, Hong Kong.

Phone : (852) 2412 0121

E-mail : kolinker@kolinker.com

Fax : (852) 2498 5908

Home page : <http://www.kolinker.com>

Software Capabilities

- Easy to operate, full screen editor and all test parameter limit specifications are stored as "Setup File" in the computer hard disk for easy operation.
- Setup Files contain the crystal frequency, drive level, and specific crystal parameters to be measured and also specifies how the crystals are sorted into 2 bins
- During automatic test mode, the computer displays the measured crystal parameters and the number of crystals in each bin continuously.
- The software compiles statistical information for the crystals being tested. This information includes mean, standard deviation, and distribution graphs.
- Testing data can be stored and printout.

Standard System Configuration

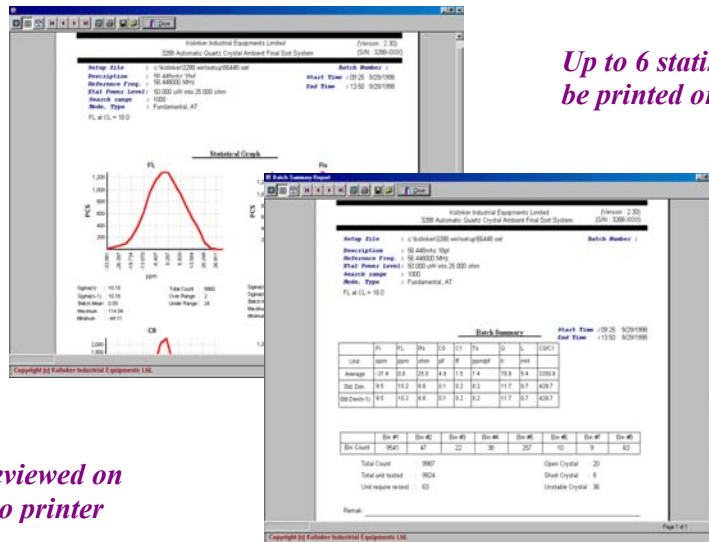
- KH1120 or KH1240 PI network Crystal measurement subsystem 1 set
- Operation software & cabling 1 set
- Controller Card 1 set
- Main Unit 1 set
- PI Test Head 1 set
- Sorting Bins 2 sets
- Automatic Feeder Bowl for 49U, 49US crystals 1 set

Options :

- Windows compatible printer
- Legend/IBM Compatible computer with Windows 95/ Windows 98/Windows ME
(Pentium III 800MHz or better with Windows 98 is strongly recommended for optimum performance, Full size PCI slot with +3V and +5V is required)

For UM Crystal :

- Model : KS300-UM is dedicated for UM crystals sorting, same operation as KS300



Specifications are subject to change without prior notice.
Photo shown is for reference only.



Kolinker Industrial Equipments Limited

Unit H-I, 22/F, Shield Industrial Centre, 84 - 92 Chai Wan Kok Street, Tsuen Wan, New Territories, Hong Kong.

Phone : (852) 2412 0121

E-mail : kolinker@kolinker.com

Fax : (852) 2498 5908

Home page : <http://www.kolinker.com>