

KO-3288

Automatic Quartz Crystal Final Sort System

(1 - 120 MHz / 1 - 240 MHz)



[KH1120 / KH1240](#)

Features

- Built-in KH-1120 / KH-1240 High accuracy Network Analyzer subsystem
- Microsoft Windows® operation allows high quality graph and report printout.
- Full Network Analyzer Configuration with Built-in Frequency synthesizer and Vector Voltmeter, gives better accuracy and repeatability as compare to other Phase Locked systems.
- High Accuracy PI-Network Measurement compatible to IEC444
- Linear design : easy maintenance, and cascable to other workstation
- Easy change over between 49U, 49US, optional 49US-SMD, UM-1, and UM-5 packages
- Sorting capability for all crystal parameters, including IR, Drive level Dependence (DLD), and Spurious modes scan
- Individual placement tunnel for each of the 8 sorting bins avoids misplacement and minimize drop shock to crystal during sorting
- Numerous User selectable Test Report formats
- Fully computer controlled : Easy operation with color monitor and full ASCII keyboard

Specifications

- Frequency Range : 1 to 120 MHz (KH-1120), 1 to 240 MHz (KH-1240)
- Measurement throughput : > 5MHz typical 5200 pcs/hr, < 5MHz approx. 3600 pcs/hr (depends on crystal Q factor)
- Measurement Capabilities : Fs, Fr, FL, FL1, FL2, Rs, Rr, RL, CL, C0, C1, L1, Q, Ts, C0/C1, DF1, DF2, DLD, DLD-gamma, Spurious Scan, IR ...
- Drive Level : 10nW - 1mW into 25 Ohm (maximum and minimum power depends on series resistance of crystal)



Kolinker Industrial Equipments Limited

Unit H-I, 22/F, Shield Industrial Centre, 84 - 92 Chai Wan Kok Street, Tsuen Wan, New Territories, Hong Kong.

Phone : (852) 2412 0121

E-mail : kolinker@kolinker.com

Fax : (852) 2498 5908

Home page : <http://www.kolinker.com>

Software Capabilities

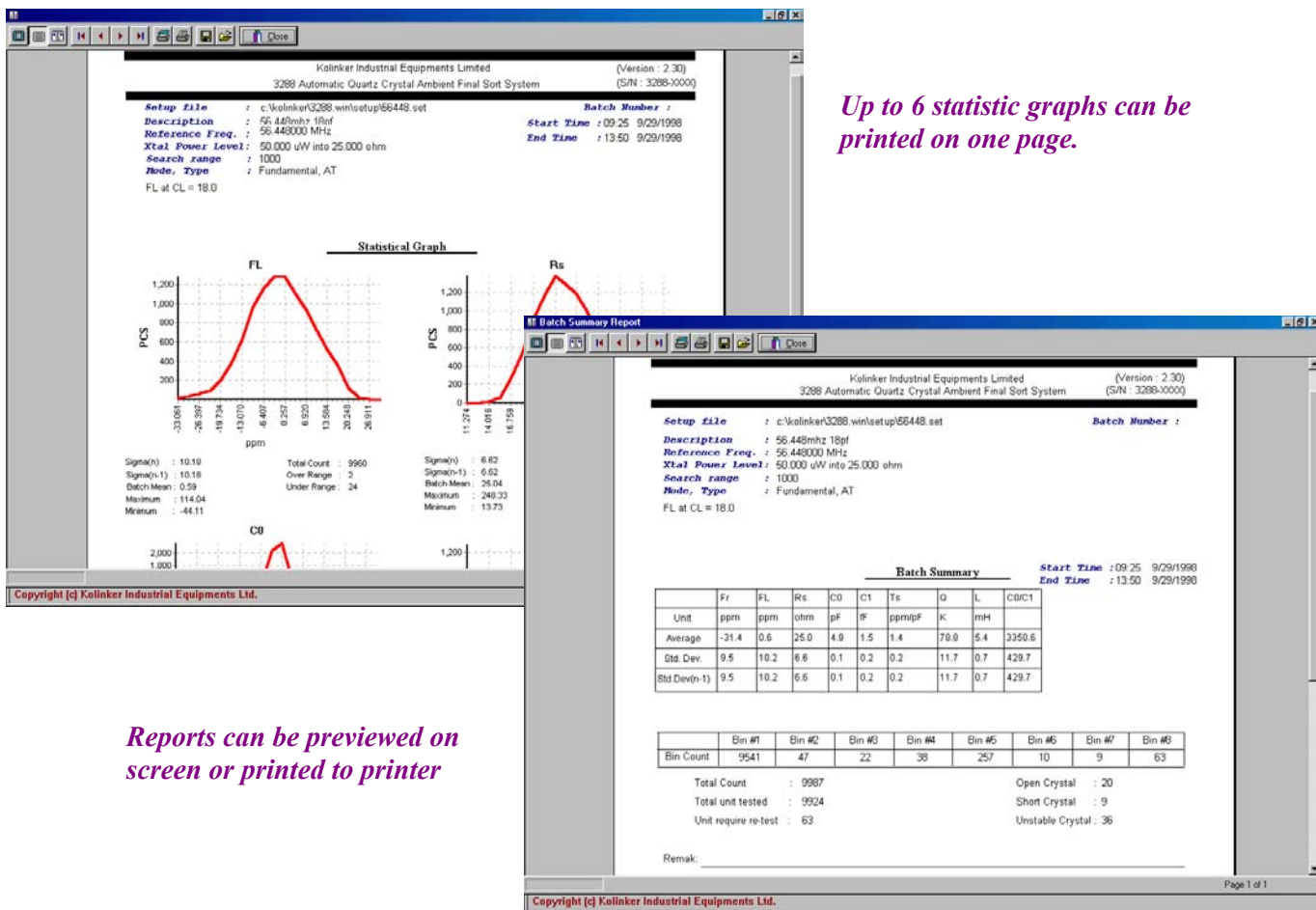
- Easy to operate full screen editor, and all test parameter limit specifications are stored as "Setup File" in the computer hard disk for easy operation.
- Setup Files contain the crystal frequency, drive level, and specific crystal parameters to be measured and also specifies how the crystals are sorted into 8 bins based upon the measured parameters.
- During automatic test mode, the computer displays the measured crystal parameters and the number of crystals in each bin continuously.
- The software compiles statistical information for the crystals being tested. This information includes mean, standard deviation, and distribution graphs.

Standard System Configuration

- KH1120 or KH1240 PI network Crystal measurement subsystem 1 set
- PC computer with minimum Pentium III 800MHz CPU, Windows 98 or higher, 1 unit
3.5" floppy, hard disk, Color SVGA Monitor, keyboard
- System controller and handling system with System Operating Software 1 set
- Automatic Feeder Bowl for HC49U and HC49US 1 unit
- Windows compatible printer 1 set

Options :

- Manual Test port
- UM-1, UM-5 automatic feeder kit
- HC-49US-SMD automatic feeder kit & test head kit



Up to 6 statistic graphs can be printed on one page.

Reports can be previewed on screen or printed to printer

Specifications herein are preliminary, and are subject to change without prior notice.
 Photo shown is for reference only.
 HP Vectra is a product of Hewlett Packard.
 Epson is the registered trademark of Seiko Epson Corporation.



Kolinker Industrial Equipments Limited

Unit H-1, 22/F, Shield Industrial Centre, 84 - 92 Chai Wan Kok Street, Tsuen Wan, New Territories, Hong Kong.
 Phone : (852) 2412 0121 E-mail : kolinker@kolinker.com
 Fax : (852) 2498 5908 Home page : http://www.kolinker.com